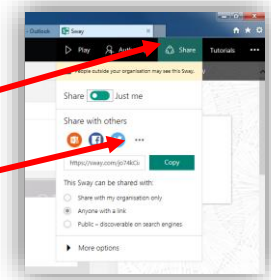


EMBEDDING SWAY

When you are happy with your Sway Click the Share button

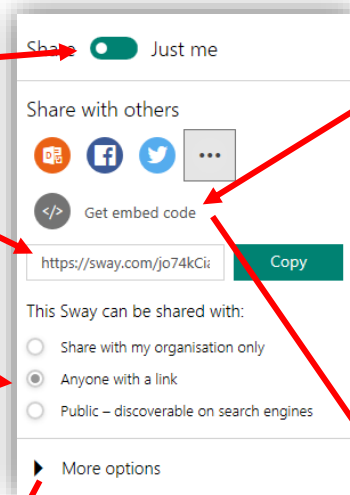
Then click the ... button to show more options



You can make your Sway private so only you can see it

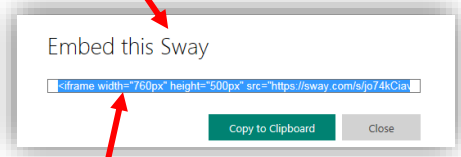
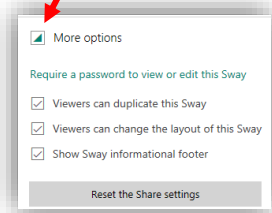
Copying the URL allows you to send a link directly to your sway

If you want students to access your sway you must select anyone with a link



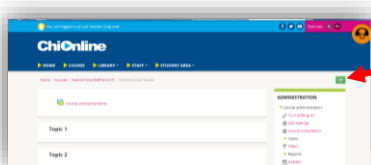
Click get embedding code to open the embedding code box

Selecting more options allows you to restrict access by setting a password, as well as restricting users editing rights



This is the code you need to embed your Sway into ChiOnline, Copy this code

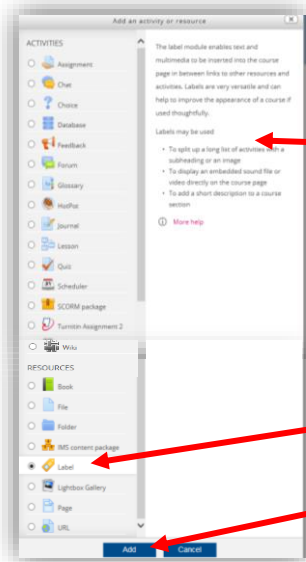
OPEN CHIONLINE



Before making any changes you must switch to editing mode by clicking on the **Turn editing on** button



Click Add an activity or resource

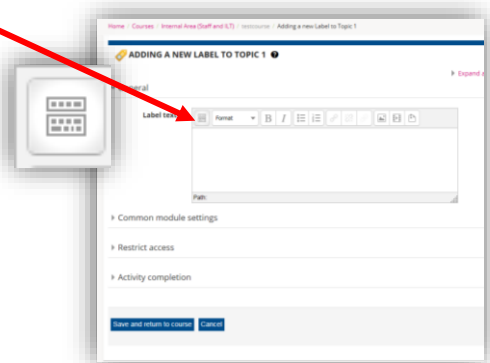


When you select an activity a brief description and uses is displayed on the right. If you need more help, there is also a More Help link which links to Moodle Docs about this activity

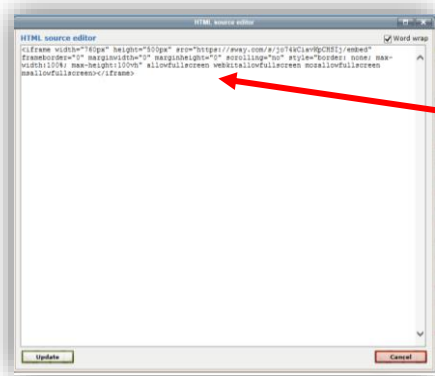
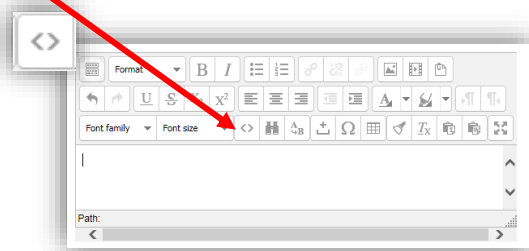
Scroll down and select Label

Then click Add

Click on the expand toolbar icon to show more editing options



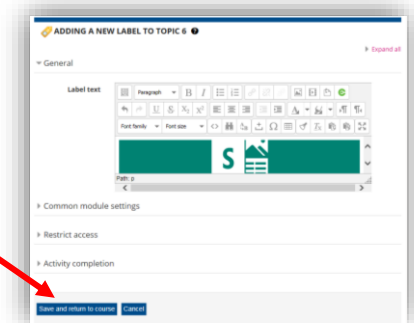
Click on the Edit HTML Source button



Paste your Embedding code into the HTML source editor

Click Update

Click Save and return to course



Your Sway will be embedded directly onto your course

Please Note: Any changes you make in Sway will automatically be updated in ChiOnline

DON'T FORGET TO TURN EDITING OFF WHEN YOU HAVE FINISHED