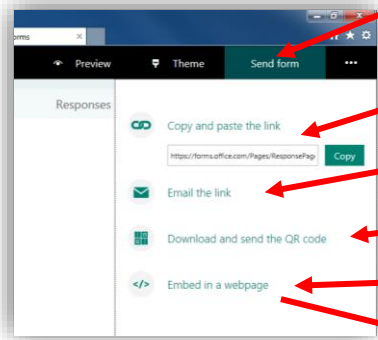


EMBEDDING FORMS



When you are happy with your Form Click the 'Send form' button

Copying the URL allows you to send a link directly to your Form

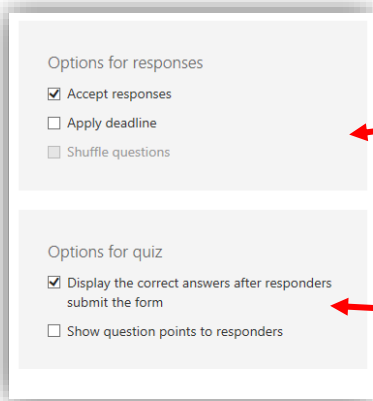
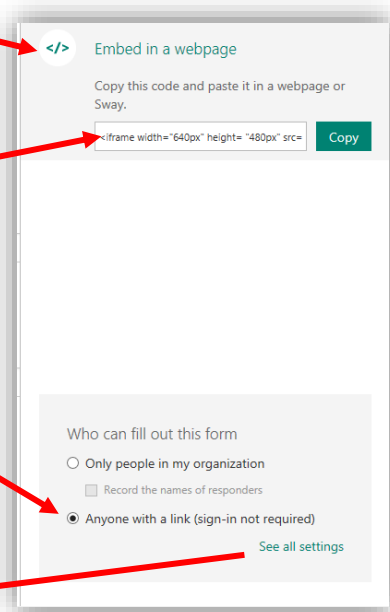
You can email a link from here

Or download and send a QR code

Then click the 'Embed in a webpage' link

This is the code you need to embed your Form into ChiOnline, Copy this code

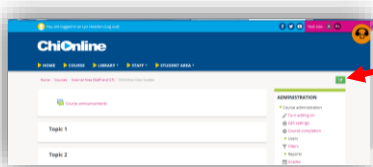
Select anyone with a link can fill out this for or students will not be able to access it



For more options select See all settings

You can set a deadline and other options here

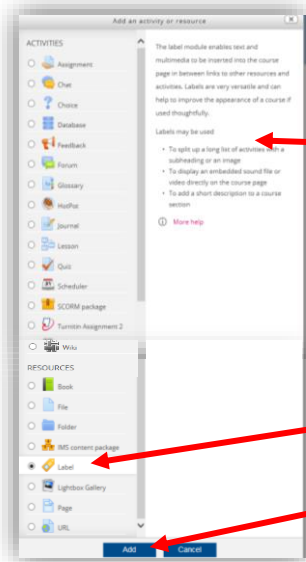
OPEN CHIONLINE



Before making any changes you must switch to editing mode by clicking on the **Turn editing on** button



Click Add an activity or resource

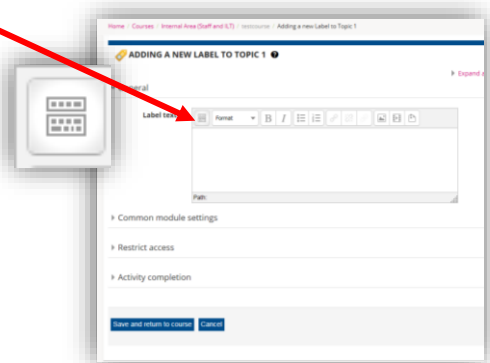


When you select an activity a brief description and uses is displayed on the right. If you need more help, there is also a More Help link which links to Moodle Docs about this activity

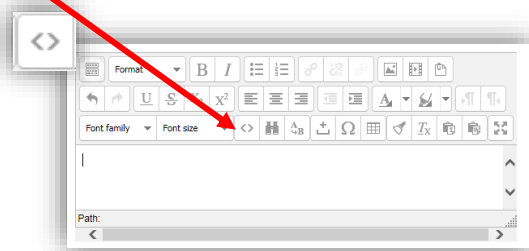
Scroll down and select Label

Then click Add

Click on the expand toolbar icon to show more editing options



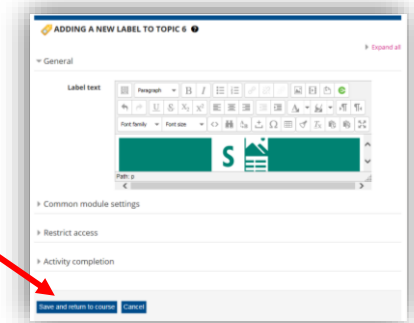
Click on the Edit HTML Source button



Paste your Embedding code into the HTML source editor

Click Update

Click Save and return to course



Your Form will be embedded directly onto your course

Please Note: Any changes you make in Form will automatically be updated in ChiOnline, and as the Form is submitted you will be able to see the responses live as they are submitted

DON'T FORGET TO TURN EDITING OFF WHEN YOU HAVE FINISHED