

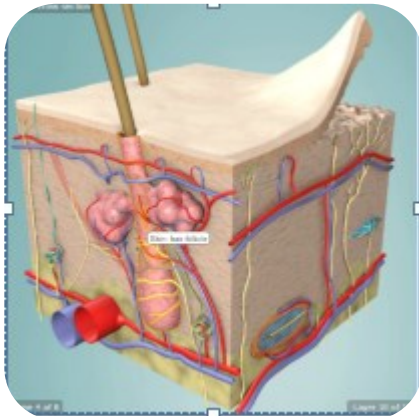
What is it?

ANATOMY.TV
POWERED BY PRIMAL PICTURES



Primal Pictures

Accurate and detailed 3D graphic rendering of human anatomy.



Online Resources



@ Chichester College

Contact us

The Library
Chichester College
lrc@chichester.ac.uk
01243 812214

Primal Pictures



Muscles of the head and neck

Online Research @ Chichester College Library

Biology
Anatomy and Physiology
Health Care
Hair and Beauty
Forensic Science
Sport

How do I log in?

Go to CCGOnline and log in with your College Microsoft 365 account. Scroll down the page and click on the link to **Learning Resources**. Go to **Online Resources**.

Click on the link for **Primal Pictures**. Then click on the link or image for **Primal Pictures**. It will give you the option to create a profile. If you don't want to create a profile, click on the grey button, **Continue to Anatomy TV**.

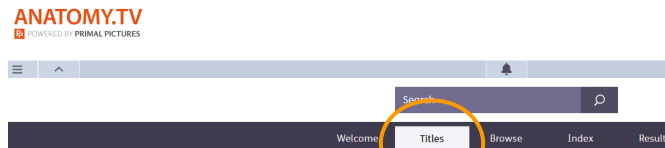
Off campus

If you are accessing Primal Pictures off college campus, select **Login** on the top right. Under **Log in with...** select **UK Shibboleth**. Click or select **Chichester College Group**.

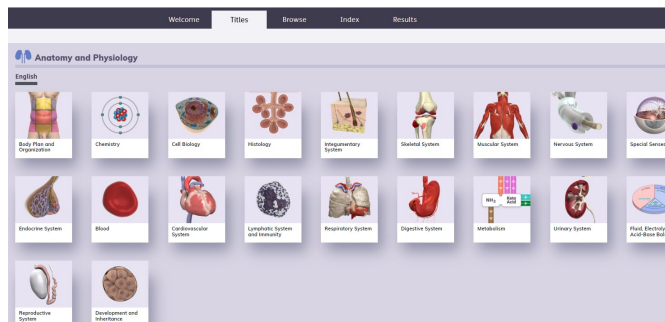
If you are not logged into your College Microsoft 365 account, please login when prompted.

How do I search the database?

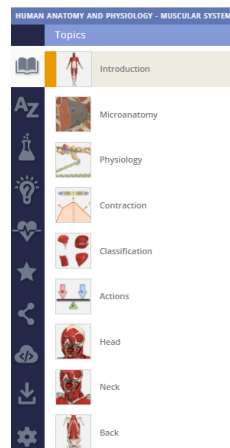
Click on **Titles** near the top of the page.



You will see a grid of 20 Anatomy and Physiology modules, that the College subscribes to.



Click on a module to see Topics, A-Z index, interactive learning, quizzes and case studies.



How do I use the results?


Each module provides a range of resources such as text information, diagrams, 3D models and videos.

Below each 3D model, there are buttons which you can use to rotate the image and break down into layers. Sections of the model can be highlighted and labelled.

You can save and print these resources.



What if I still need help?

Click on the information icon to the right of the page  and then **More Help**.

This will take you to a video tutorial and user guide. Or please ask a member of library staff if you need help using this resource.