

# What is it?

## PRIMAL PICTURES

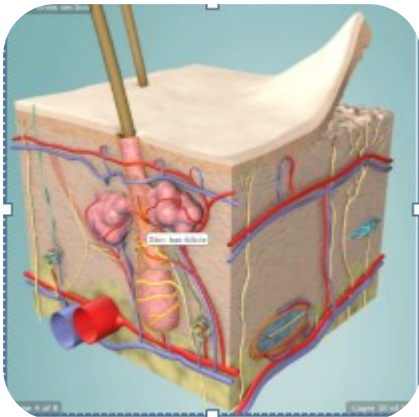
POWERING **ANATOMY.TV**

PRIMAL  
PICTURES 



## Primal Pictures

Accurate and detailed 3D graphic rendering of human anatomy.



### Online Resources



@ Chichester College

## Contact us

The Library  
Chichester College  
[lrc@chichester.ac.uk](mailto:lrc@chichester.ac.uk)  
01243 812214

## Primal Pictures



Muscles of the head and neck

Online Research @ CCG Libraries

Biology  
Anatomy and Physiology  
Health Care  
Hair and Beauty  
Forensic Science  
Sport

# How do I log in?

Go to CCGOnline and log in with your College Microsoft 365 account. From the **Students** dropdown menu at the top of the page, select **Library, Library Resources**. Go to **Online Resources**.

Click on the icon for **Primal Pictures**. Then click on the link or image for **Primal Pictures**. You'll be logged in as JISC User, Chichester College Group.

If you wish to create a **Personal Profile**, click on the person icon on the top right and follow the instructions.

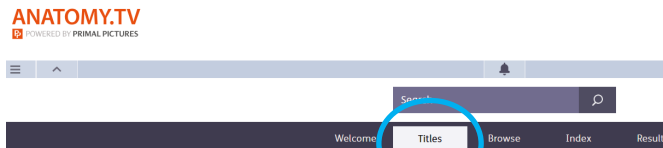
## Off campus

If you are accessing Primal Pictures off college campus, select **Login** on the top right. Under **Log in with...** select **UK Shibboleth**. Click or select **Chichester College Group**.

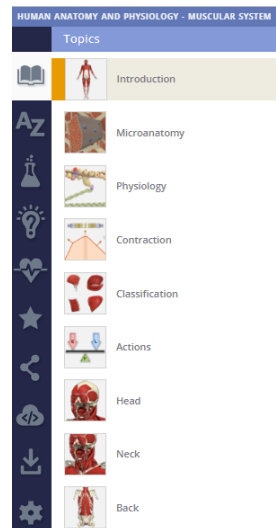
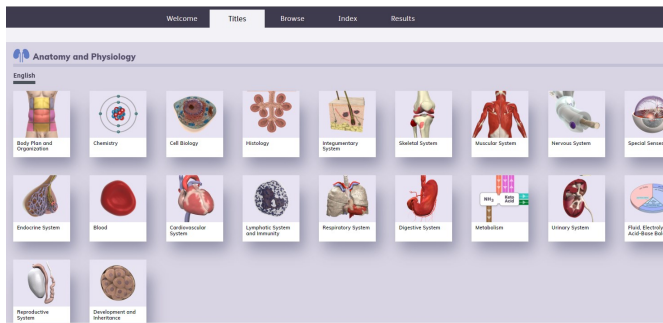
If you are not logged into your College Microsoft 365 account, please login when prompted.

# How do I search the database?

Click on **Titles** near the top of the page.



You will see a grid of 20 Anatomy and Physiology modules, that the College subscribes to.



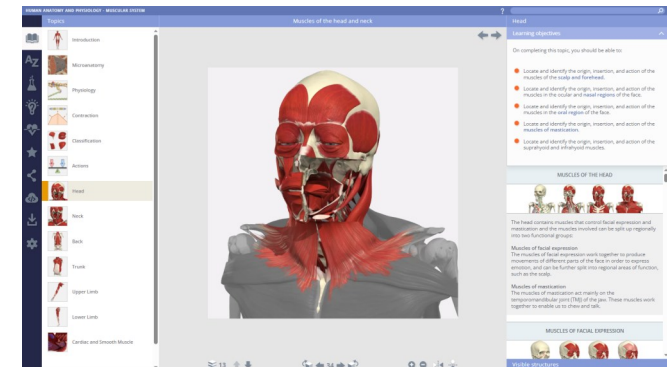
Click on a module to see Topics, A-Z index, interactive learning, quizzes and case studies.

# How do I use the results?

Each module provides a range of resources such as text information, diagrams, 3D models and videos.

Below each 3D model, there are buttons which you can use to rotate the image and break down into layers. Sections of the model can be highlighted and labelled.

You can save and print these resources.



## What if I still need help?

Click on the information icon (i) to the right of the page and then **More Help**.

This will take you to a video tutorial and user guide. Or please ask a member of library staff if you need help using this resource.