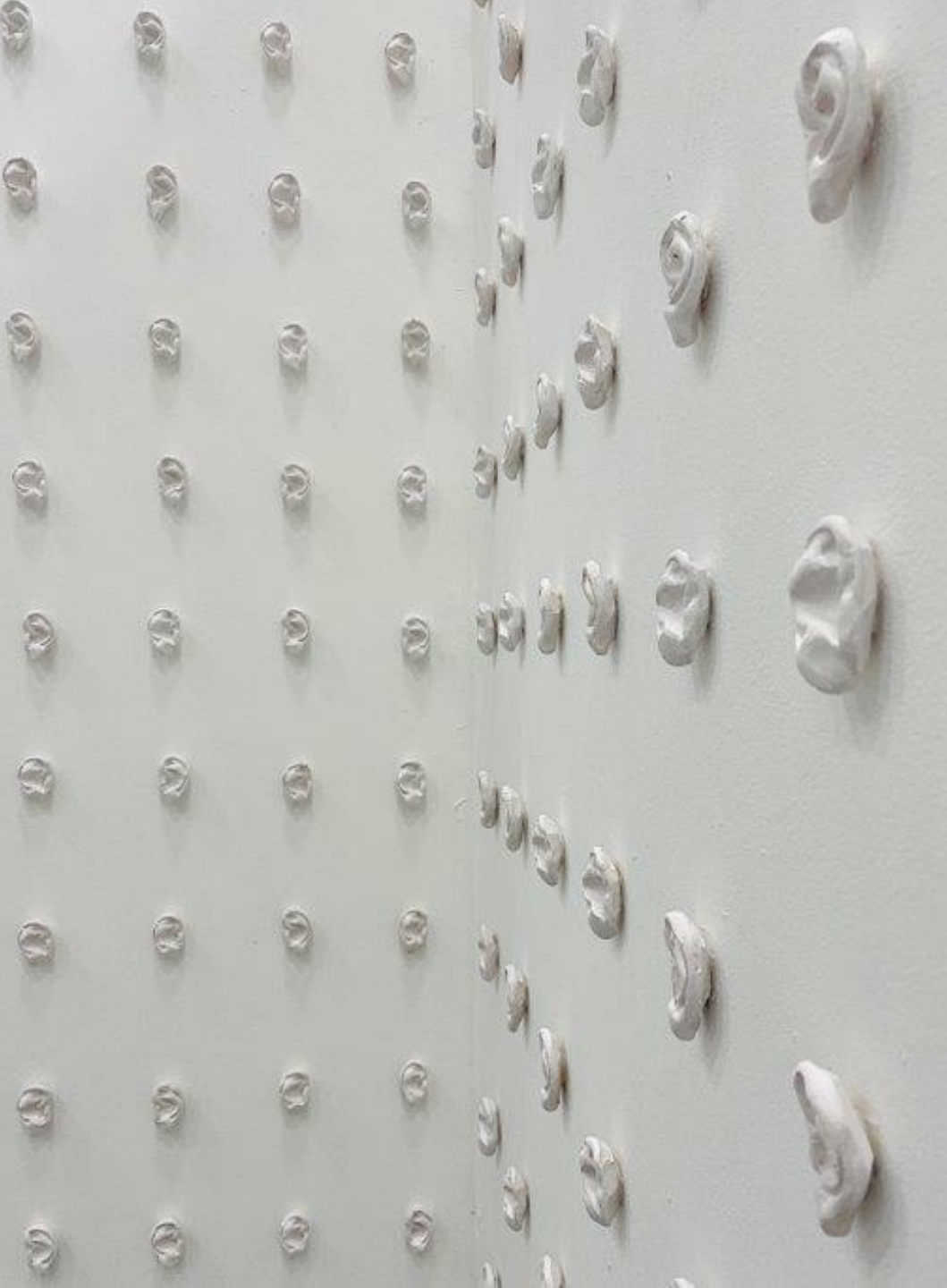




Welcome to Brighton MET

part of the Chichester College Group



Today's welcome event will cover the following:

- Enrolment and week 1
- Timetables
- An overview of the course
- Kit and suggested reading lists.
- The Summer Project.
- Opportunities while studying with us
- Q&A



TODAY

There is no planned fire drill today.

If you hear the fire alarm, make your way CALMLY into the plaza area outside where you will be directed by fire marshals.

Please DO NOT leave the college site.

Please DO NOT USE THE LIFTS when the fire alarm is sounding.

Induction week Timetable

	9-30 - 11am	11-11.30	11.30 - 1pm	1 - 2pm	2- 4pm
Monday 1/9/25	Enrolment: 8.45am - 12 noon You will be emailed your time slot Please check your emails				
Tuesday 2/9/25	Tutor Led Studio Session		Tutor Led Studio Session		Tutor Led Studio Session
Wednesday 3/9/25	Drawing day - TBC - weather dependant		Drawing day - TBC - weather dependant		Big Welcome by the Principal
Thursday 4/9/25	Tutor Led Studio Session		Tutor Led Studio Session		Tutor Led Studio Session
Friday 5/9/25					

Course Timetable

TIMETABLE	9.30am – 11am	Break 11- 11.30am	11.30am -1pm	Lunch 1-2pm	2pm - 4pm	Open studio access 4pm - 8pm Monday - Thursday
MONDAY	<u>Self directed</u> study		<u>Self directed</u> study		<u>Self directed</u> study	
TUESDAY	Tutor Led Studio Session		Tutor Led Studio Session		Tutor Led Studio Session	
WEDNESDAY	Tutorial - Tutor Led Studio Session FAD Group Tutorial 9.30am - 10.30am		Tutor Led Studio Session		2pm - 3.30pm Tutor Led Studio Session	Lessons finish at 3.30pm on Wednesdays only
THURSDAY	Tutor Led Studio Session		Tutor Led Studio Session		Tutor Led Studio Session	
FRIDAY	Life drawing <u>November -</u> December		Life drawing <u>November -</u> December		Life drawing <u>November -</u> December	

The Foundation Course Structure

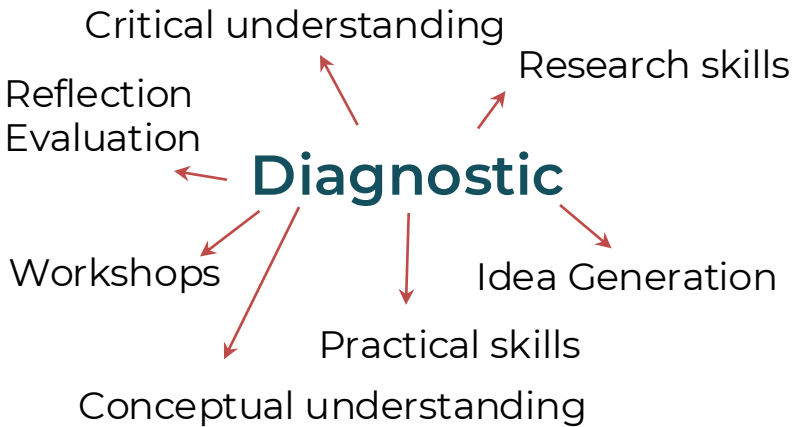
1



2



3



Taught

3D Design
Fashion & Textiles
Fine Art
Specialist Practice
Graphic Communication
Illustration & Animation

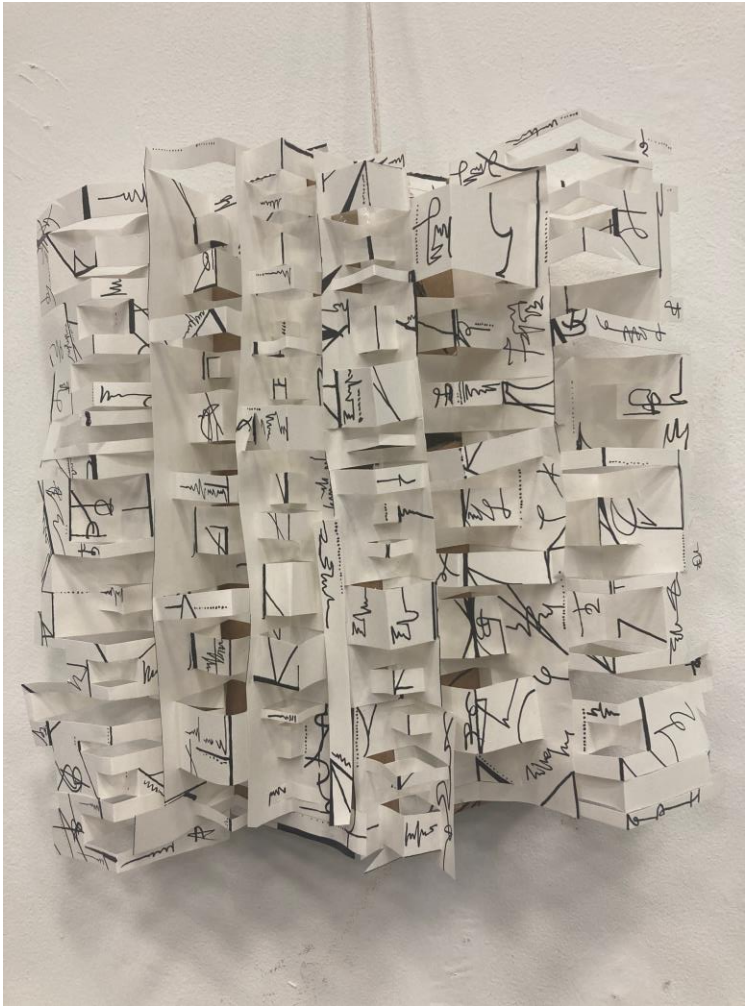
Facilitated

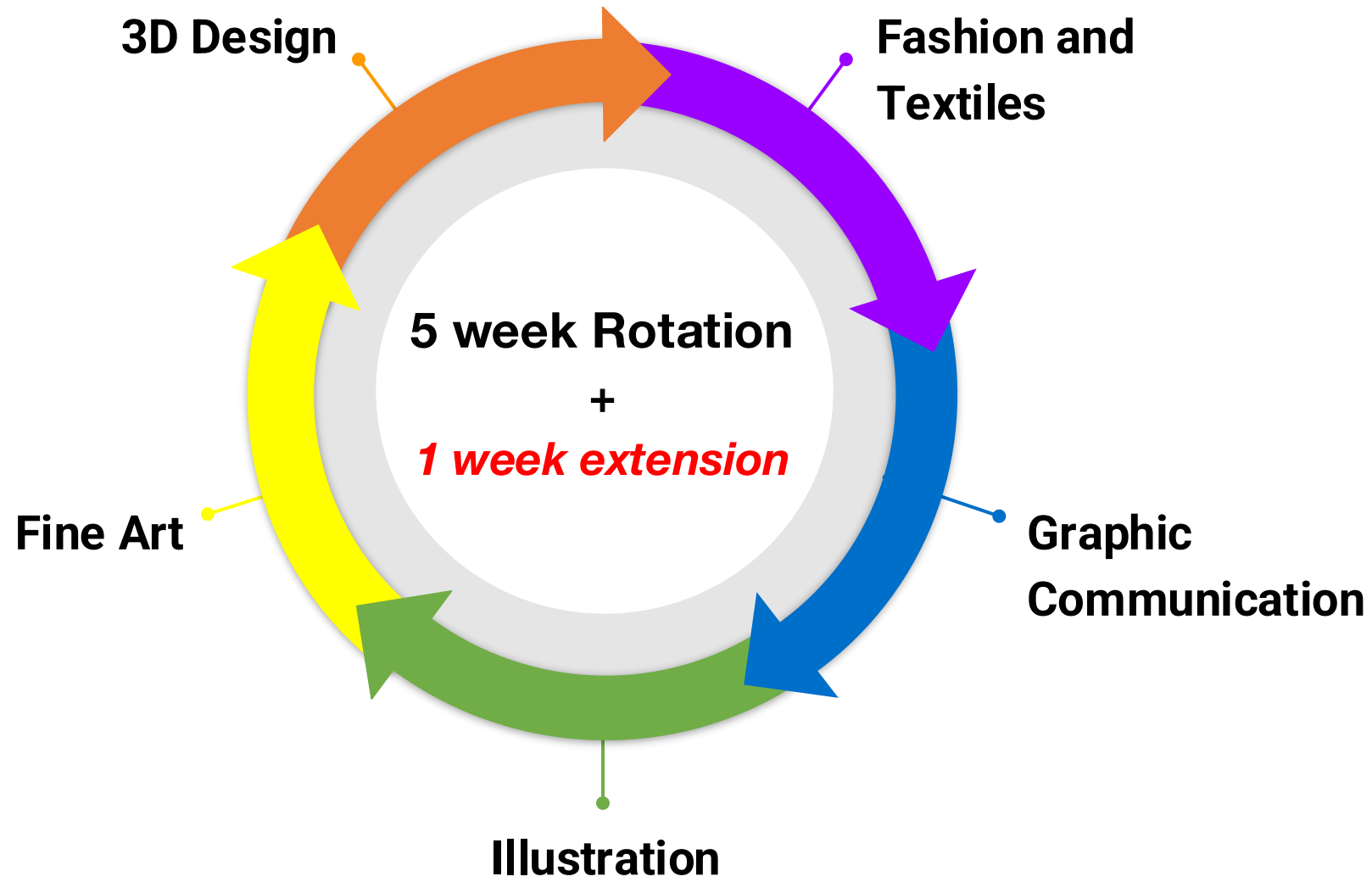
Consolidating practice
Final Major Project

Independent

Stage 1: Diagnostic





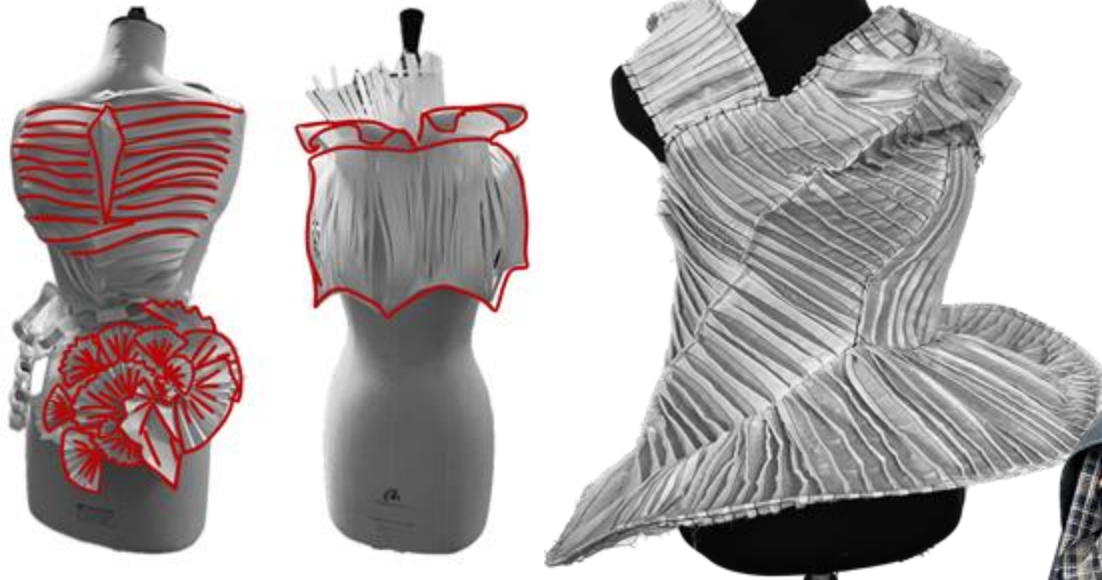




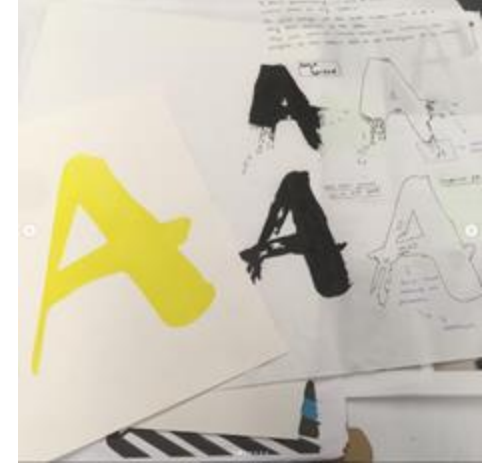
Stage 2: Specialist Practice



Fashion and Textiles



Graphic Communication Design

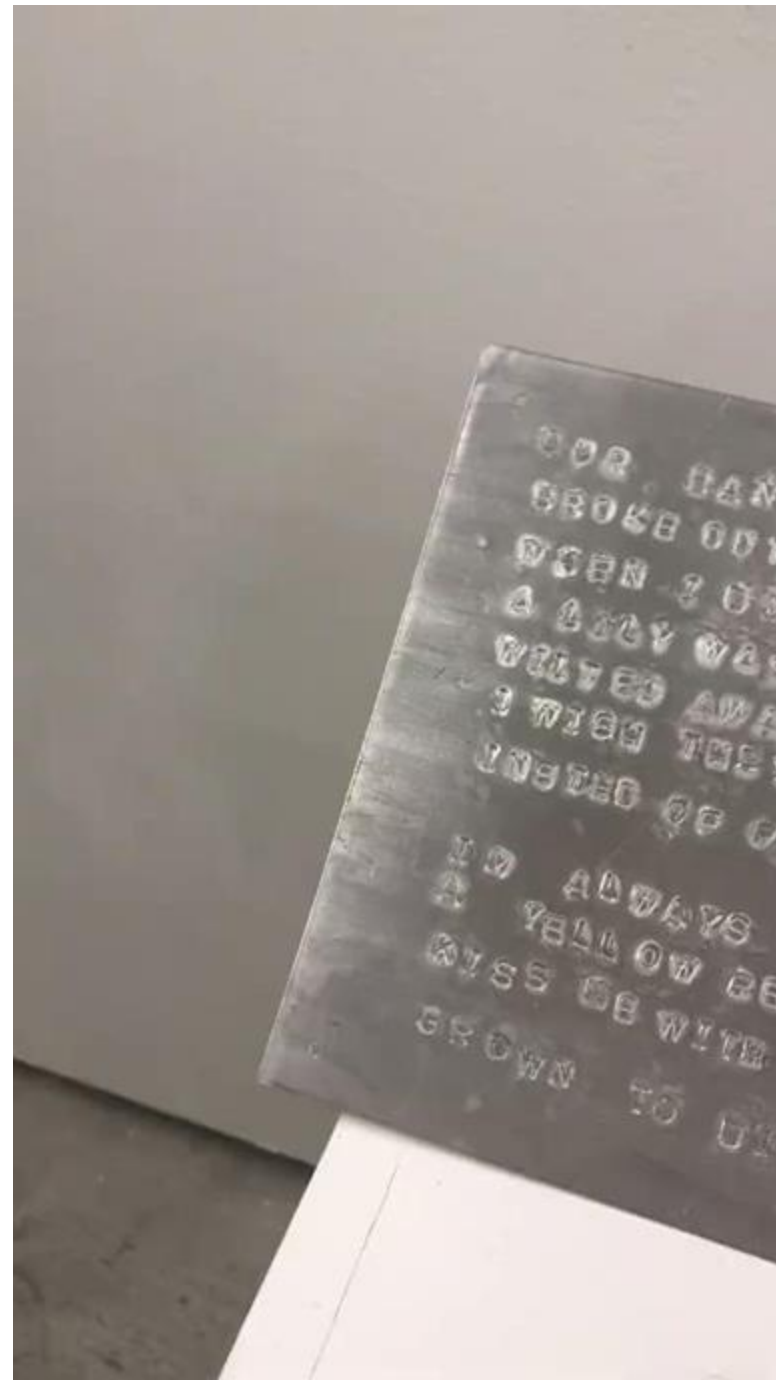




Illustration



Fine Art



3D Design



Stage 3: Consolidating Practice

Final Major Project





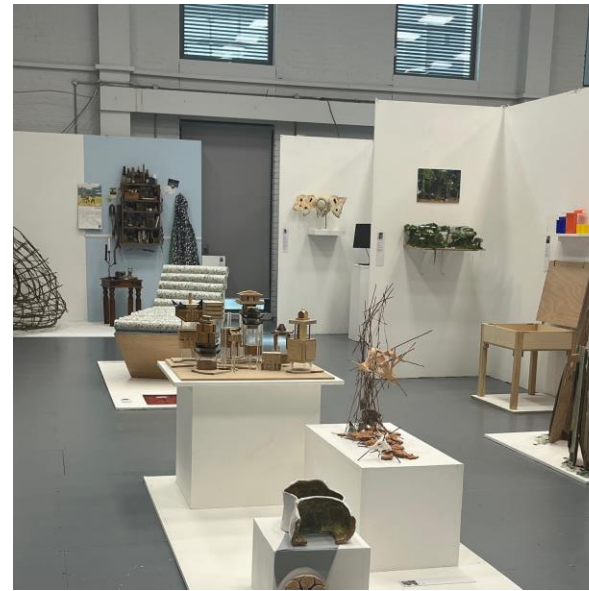
Brighton MET Summer Show 2025 17 June - 3 July

MET FEST

SUMMER SHOW '25

PREVIEW EVENING
 Tuesday 17 June 6-8.30pm
 VIP drinks reception 5-6pm
 Baruhlo Samba band opening the show from 5.45pm

OPEN TO THE PUBLIC
 Wednesday 18 June to Thursday 3 July
 9am-4pm (except weekends)



Brighton MET Art Shop: Lockers:

Once you are settled after the induction week, you will have the opportunity to get a locker. There is a £5 (non refundable) fee for the key which must be returned at the end of the year.

Kit List
A3 Hardback sketchbook
Notebook and pen
USB stick 12BG
Smartphone Camera
Art box / Tool box (to store equipment in)
Scalpel / Craft knife
Scissors (small & large - serrated kitchen ones are strong and useful)
Masking tape & Sellotape
Glue sticks
30cm Metal ruler
Good quality drawing pencil set (4H, 2H, HB, B, 2B, 4B, 6B)
Willow charcoal
Indian ink (500ml)
Acrylic paints 100ml (Cadmium Yellow, Lemon Yellow, Cadmium Red, Magenta, Ultramarine, Cerulean Blue, Black, White)
Selection of paint brushes (DIY & Art brushes in varying sizes)
Water container / jam jar with lid
Palette (plate to mix paints onto)
PVA Glue (200ml)
Needle and thread
Polyholdall clear plastic folder (To transport work daily)

EPQ



During your time at MET you will have the opportunity to undertake an EPQ.

The Extended Project Qualification (EPQ) is a research project course, equivalent to half an A-Level and up to 28 UCAS points.

This can be undertaken as an academic report or an artefact (performance, art or music piece)

We will be sharing more information about this with you in September and how to sign up!



Follow us on Instagram



- Network
- Connect
- Collaborate
- Keep up to date with current news!



SUSTAINABLE FASHION WEEK

27th/28th September 2025
ReWear Revolution

Create reimagined garments for Sustainable Fashion Week.
This will coincide with the new fashion year and the launch of 'Secondhand September.'

Enjoy the project and let your creativity flourish as you explore
the ethical and imaginative dimensions of fashion!

Please refer to the Sustainable fashion week presentation.

<https://www.sustainablefashionweek.uk/sfw-2024#:~:text=SF%202024%20is%20community%2Dled,12%20Sep%20and%2012%20Oct.>



Student Experience at Brighton MET

YOUR VOICE
YOUR COLLEGE
YOUR EXPERIENCE





YOUR STUDENT UNION!

Every student is a member of the SU when you enrol.

The union represents what the students want throughout the college.

We help to ensure all services are outstanding for our students.

Organise local and overseas trips.

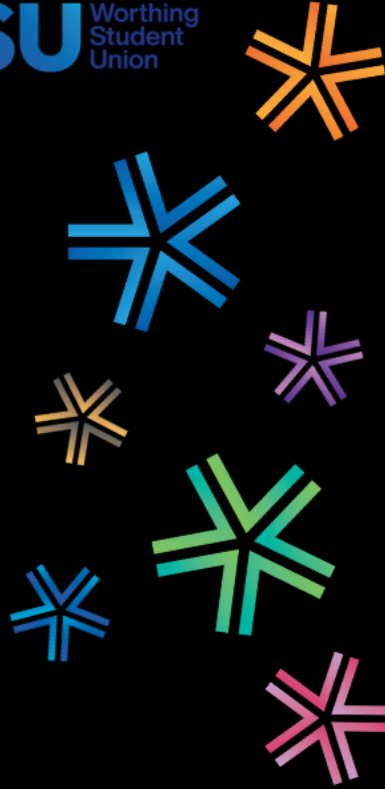
Organise charity and college wide events.

- Negotiate discounts for students.





Tell us what clubs you
would like to see at college:



Key Dates:

Enrolment Day: Monday 1st September

First day of College: Tuesday 2nd September 9.30am