

MET



Welcome to Brighton MET
part of the Chichester College Group



TODAY

There is no planned fire drill today.

If you hear the fire alarm, make your way CALMLY into the plaza area outside where you will be directed by fire marshals

Please DO NOT leave the college site

Please DO NOT USE THE LIFTS when the fire alarm is sounding

Welcome to: Level 3 Fashion Design & Business Diploma!



In today's event will cover the following:

- An overview of the course
- Timetable
- Enrolment Date and Time
- The Summer Project
- Kit list, reading list and shows to see over summer.
- Any questions you might have

The Course Structure & Sequence:



01

The Creative Process

Stage 1

Analyse. Explore. Develop.
Apply. Assess. Review. Reflect.
Connect. Generate Ideas.
Demonstrate Skills. Visual
Language. Purpose. Risk
Taking. Research. Create.
Document. Make.

TAUGHT & FACILITATED

02

Developing Creative

Practice

2D. 3D. 4D. Problem
Solving. Professional
working practice.
Professional presentation
techniques. Networking &
Live projects.

TAUGHT & FACILITATED

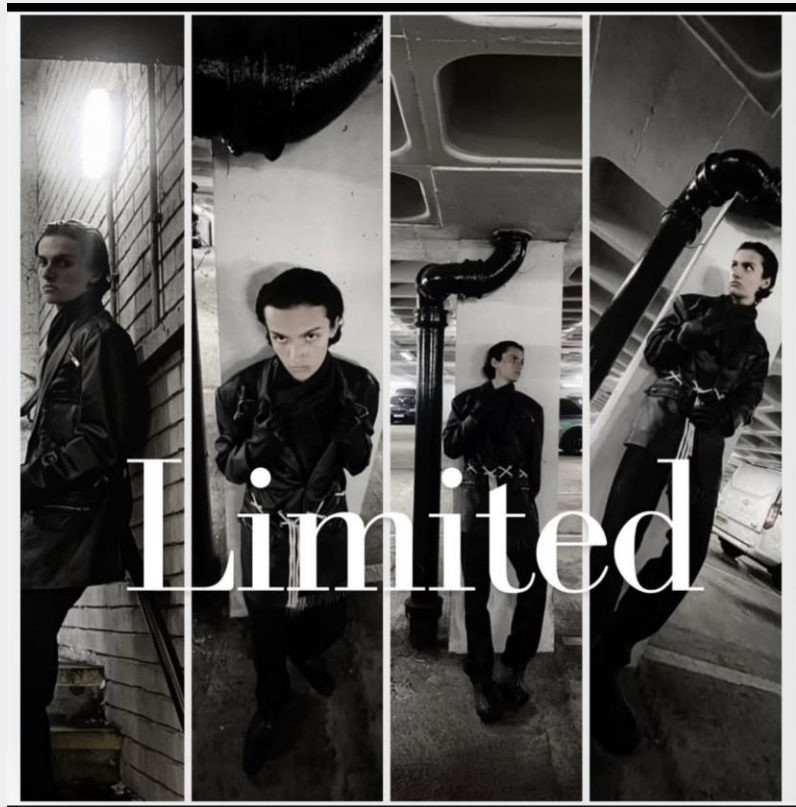
03

Responding to a Set Brief

This is a 10 week Final
Major Project.

INDEPENDENT

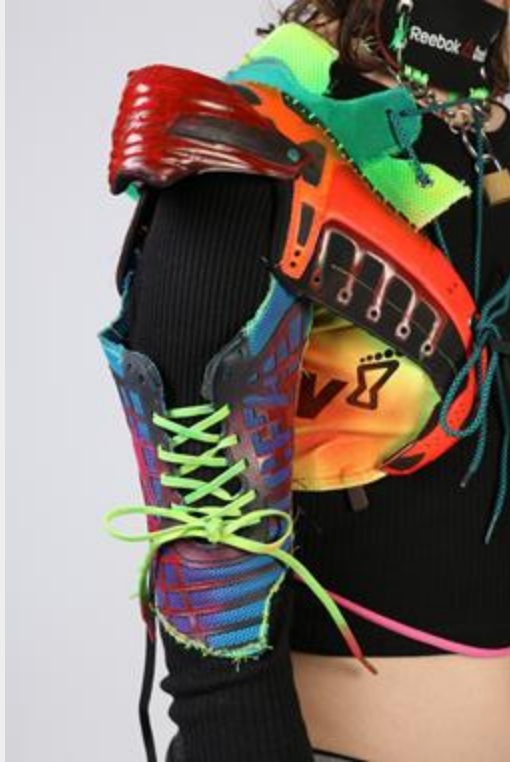




A classroom scene where a woman in a purple shirt is presenting to a group of students. A large screen displays a video of a woman with a colorful, patterned background. The room has a whiteboard, a clock, and various items on shelves.



The Study Program



Fashion Design & Business Lessons

This is the largest part of your study program, with 3 scheduled days in the studio, taught by a tutor.

Tutorial

You will have 1 hour a week with your pastoral tutor, Nicole, where you will cover general study skills and topics in 1-1 sessions.

English & Maths

In case you do not achieve a grade 4 or above, you will be required to retake the lessons, and they will be integrated into your timetable.

Self Directed Study

You will be expected to work on tasks independently in the studio, workshops, or the library/Learning Zone.

Work Experience Work related projects

This will be integrated into your study program and will constitute a key element of your overall program. You will complete 30 hours of WEX.

The Timetable

TIMETABLE	9am – 10.15am	Break 10.15- 10.45am	10.45am -1pm	Lunch 1-2pm	2pm – 4.30pm	Open studio access 4pm - 8pm Monday - Thursday
MONDAY	EAM GCSE Retake sessions 9am – 12 noon		Tutor Led Studio Session Natasha Holdgate Studio: 0.32		Tutor Led Studio Session Natasha Holdgate Studio: 0.32	
TUESDAY	Self Directed Study					
	9.30am – 11am	Break 11am – 11.15am	11.15am - 12.30pm	Lunch 12.30p m - 1.30p	1.30pm - 2.45pm	Open studio access 4pm - 8pm Monday - Thursday
WEDNESDAY	Tutor Led Studio Session Natasha Holdgate Studio: 0.32		Tutor Led Studio Session Natasha Holdgate Studio: 0.32		EAM GCSE Retake sessions 1.30pm - 4pm	
	9.30am – 11am	Break 11am - 11.30am	11.30am -1pm	Lunch 1-2pm	2pm – 3.30pm	3.30pm - 4.30pm
THURSDAY	Tutor Led Studio Session Natsha Holdgate Studio: 0.32		Tutor Led Studio Session Natsha Holdgate Studio: 0.32		Tutor Led Studio Session Natsha Holdgate Studio: 0.32	Pastoral Tutorial Lesson Nicole Nisiotis Studio 0.32
FRIDAY	EAM GCSE Retake sessions		Self Directed Study		Self Directed Study	

FASHION SHOW



MET FEST







Live Projects and Competitions



The Royal Opera House 23/24

1st year Fashion Design Student - Highly commended

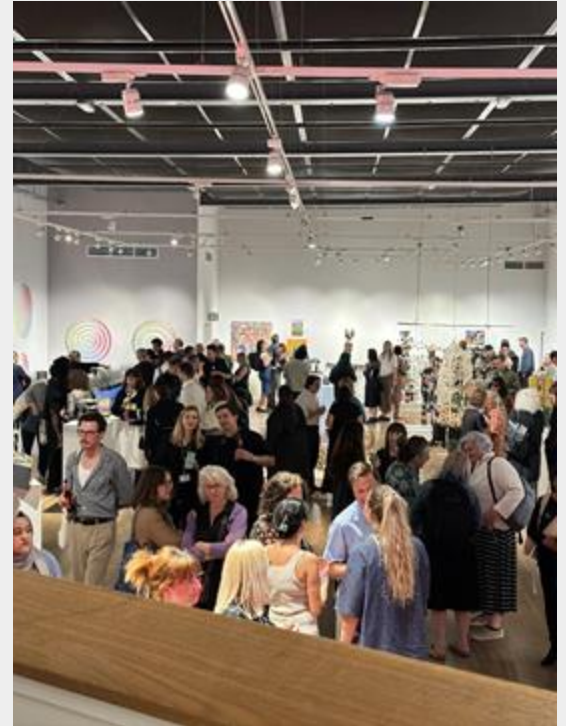
Award



Live Projects and Competitions



UAL Creative Origins Exhibition 23/24
2nd year Fashion Design Student



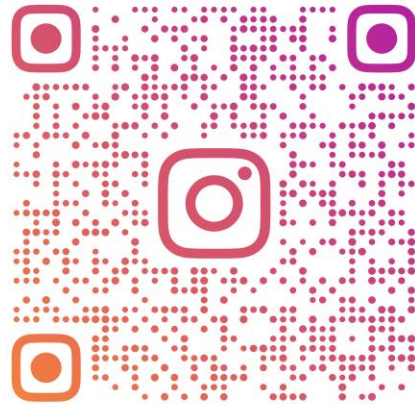
Live Projects and Competitions



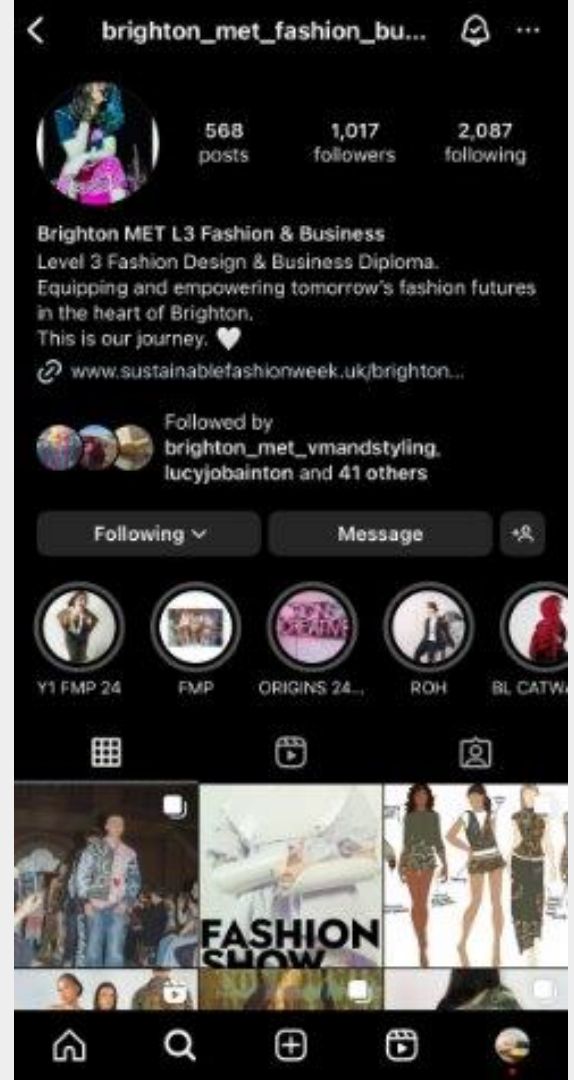
Sustainable Fashion Week Catwalk show



Follow us on
Instagram!



BRIGHTON_MET_FASHION_BUSINESS



Enrolment Day & Time:

You will enroll onto your course on Thursday 28th August from 2.30pm onwards, this will be in the library.

The time and date will be confirmed by email on 1 August, please look out for this and arrive during your designated time slot.

Please check for this email (and in your spam folder too)

It is compulsory that you bring evidence of your GCSE results and photo ID to enroll.

AT ENROLMENT YOU WILL RECIEVE YOUR INDUCTION TIMETABLE FOR WEEK COMMENCING 1ST SEPTEMBER.

English & Maths:

All students aged 16 -18 years on a full-time course are required to develop their English and Maths skills if they do not hold a GCSE grade 4 or above in both subjects.

Please be aware that if you do not have these qualifications, you will be required to undertake Maths and/or English alongside your main program of study.

This is compulsory and not optional.

Non-attendance could result in you being withdrawn from your entire program of study.



Student Experience at Brighton MET

YOUR VOICE
YOUR COLLEGE
YOUR
EXPERIENCE





YOUR STUDENT UNION!

Every student is a member of the SU when you enrol.

The union represents what the students want throughout the college.

We help to ensure all services are outstanding for our students.

Organise local and overseas trips.

Organise charity and college wide events.

- Negotiate discounts for students.



Tell us what clubs you
would like to see at



ANY QUESTIONS?