

MEET





Welcome to Brighton MET

part of the Chichester College Group



TODAY

There is no planned fire drill today.

If you hear the fire alarm, make your way CALMLY into the plaza area outside where you will be directed by fire marshals

Please DO NOT leave the college site

Please DO NOT USE THE LIFTS when the fire alarm is sounding



Hatti Smith 2024



UAL Level 3 Foundation Diploma in Photography

Course Code: Mart005F1A

WELCOME DAY- 2nd July 2025

- Meet course leader/ team
- Course presentation
- Receive and discuss Summer brief (will be emailed too) including kit list
- View Summer show
- Q&A

ENROLMENT (invited) 28.August from 3pm in the college library


START OF TERM

TUESDAY SEPTEMBER 2nd September - INDUCTION WEEK -start of Term

You should meet at MET College Reception **9.30 am** where you will be registered by the Course Leader **Beatrice Haverich** and taken to your base room.
You will need to bring the following items with you on the first day of term:

PEN / PENCIL AND NOTEBOOK
COMPLETED SUMMER PROJECT (by Tuesday 2nd of September)

Timetable:

 TIMETABLE	9.30am – 11am	Break 11- 11.30am	11.30am -1pm	Lunch 1-2pm	2pm - 4pm	Open studio access 4pm - 8pm Monday - Thursday
MONDAY	<u>Self directed</u> study		<u>Self directed</u> study		<u>Self directed</u> study	
TUESDAY	Tutor Led Studio Session Beatrice Haverich 0.33		Tutor Led Studio Session Beatrice Haverich 0.33		Tutor Led Studio Session Beatrice Haverich 0.33	
WEDNESDAY	Tutorial - Tutor Led PASTORAL 9.30AM - 10.30AM Teaching starts at 10.30am - 11am Beatrice Haverich 0.33		Tutor Led Studio Session Beatrice Haverich 0.33		2pm - 3.30pm Tutor Led Studio Session Beatrice Haverich 0.33	
THURSDAY	Tutor Led Studio Session Beatrice Haverich 0.33		Tutor Led Studio Session Beatrice Haverich 0.33		Tutor Led Studio Session Beatrice Haverich 0.33	
FRIDAY	<u>Self directed</u> study		<u>Self directed</u> study		<u>Self directed</u> study	

WHAT TO EXPECT

VOCATIONAL Art & Design programme of study

CREATIVE environment to respond to energetic and lively projects

TIME to develop a personal style in a structured environment

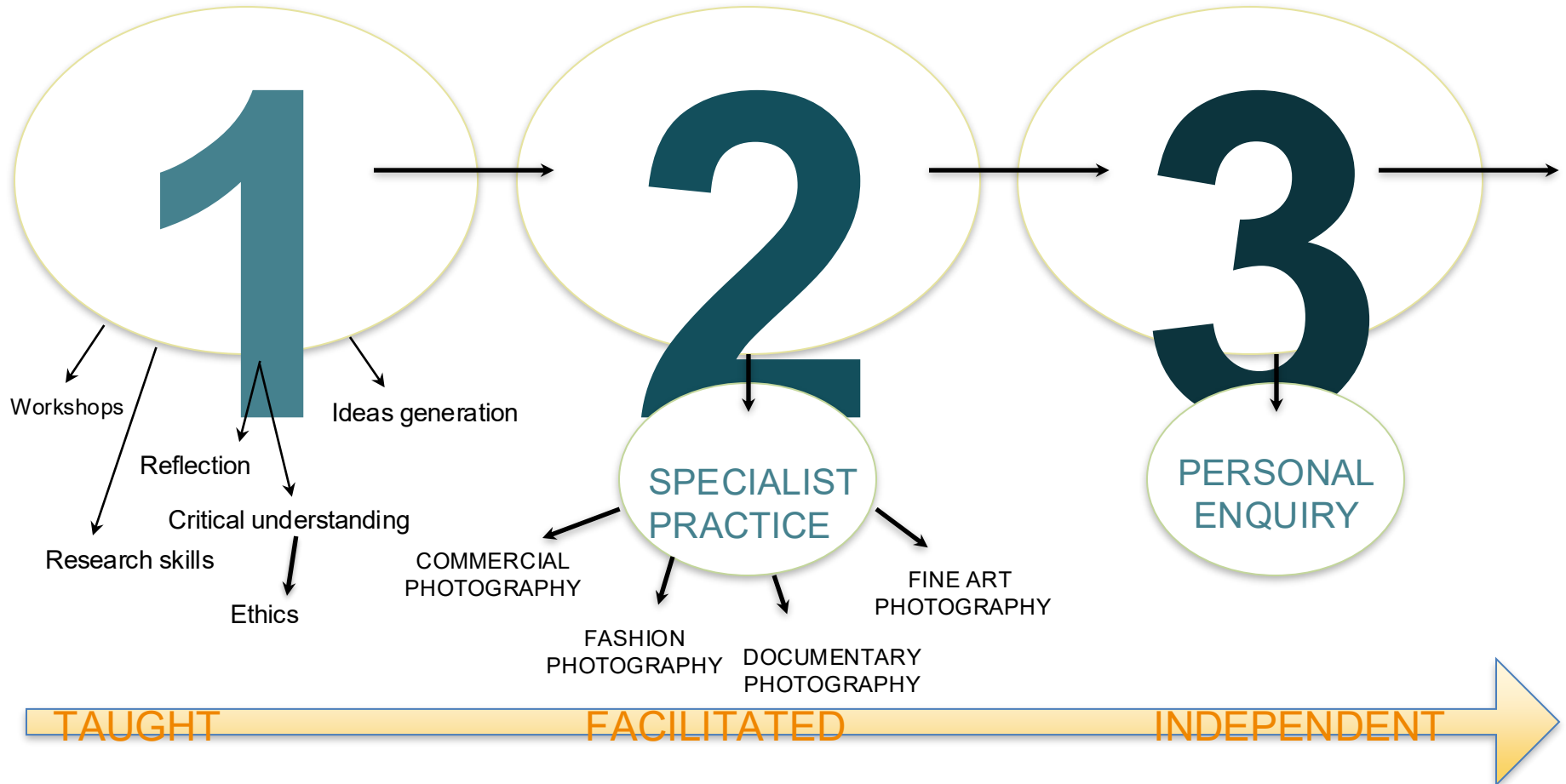
FOCUS on PORTFOLIO development

PROGRESSION preparation and guidance



Kaelan Stallman Gill 2024

PHOTOGRAPHY





KJ Major 2024

Core Photography

Employability/ University
preparation/ WEX

Tutorial

Professional Practice
(Studio/ Darkroom)

FOUNDATION DIPLOMA PROGRAMME OF STUDY

FACILITIES: Studio Photography



Studio Lighting workshop with Oliver Martin



OXFAM 'Upcycle' collaboration w. Fashion Shoot 2024







Collaboration with
Visual Merchandise



Collaboration
with Fashion &
Theatre MakeUp



ANALOGUE: Darkroom Exploration



Liquid Emulsion



Darkroom
Experiments



Chemigrams



Cyanotype





Zines/
Text & Image
Exhibition



Large Format camera and Projection Workshop

ENRICHMENT FOR ALL

ALAMY

LIVE BRIEFS

TRIPS TO LONDON

BRIGHTON PHOTO FRINGE

INDUSTRY SPEAKERS

INDUSTRY LED WORKSHOPS

PHOTOWORKS

LINK TO BRIGHTON UNIVERSITY

WEX ENRICHMENT

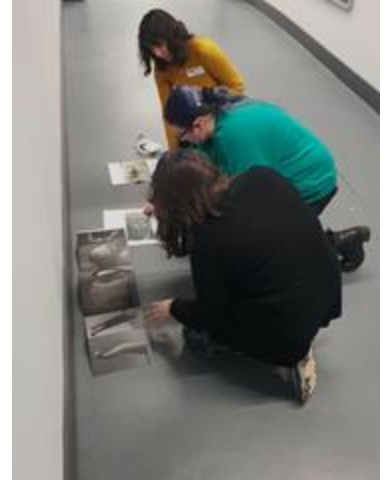


WEX

- As part of your program you are expected to undertake a minimum of 30 hours of Work Experience
- Industry workshops
- Artists/designer seminars
- Live Projects i.e. Photo Fringe
- Enrichment activities



Will Waterworth & Joel Kerr
ARTIST TALK





Student Experience at Brighton MET

YOUR VOICE
YOUR COLLEGE
YOUR
EXPERIENCE





YOUR STUDENT UNION!

Every student is a member of the SU when you enrol.

The union represents what the students want throughout the college.

We help to ensure all services are outstanding for our students.

Organise local and overseas trips.

Organise charity and college wide events.

- Negotiate discounts for students.



Tell us what clubs you
would like to see at



MET Fest 2025

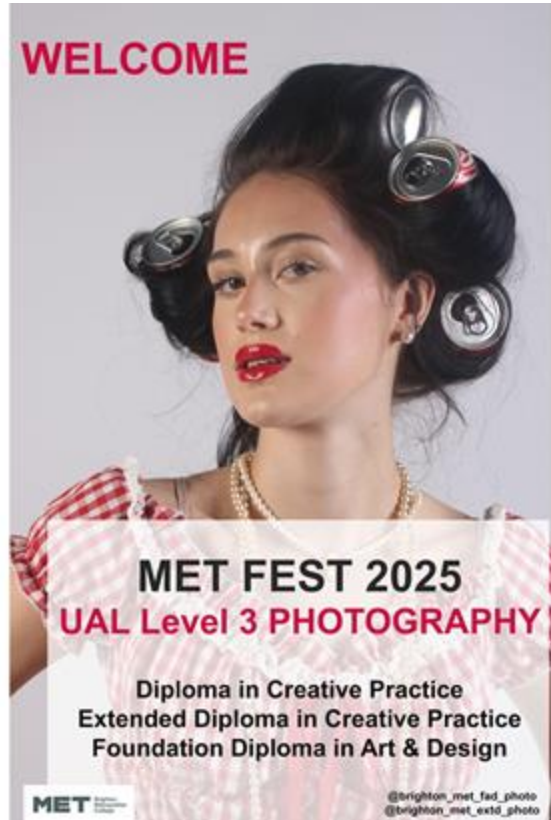




Photo Fringe October 2024' Common Ground'



Summer Show 2024



https://drive.google.com/file/d/1CLgTtfIErHM2pUg_kvFHoGyKnc-GsVx/view?usp=sharing



Creative Industries Brighton

SUMMER SHOW '24

PREVIEW EVENING
Thursday 20 June | 6-8.30pm
VIP drinks reception 5-6pm
Fashion catwalk show and prize-giving from 7.30pm

OPEN TO THE PUBLIC
Monday 24 June
- Thursday 4 July | 9am-4pm
(except weekends)

Brighton MET College
Central Campus | Pelham Street | BN1 4FA



Callum Bosworth/ Eoin Shannon/
Scarlett Bradbury 2024

EoYShow 2023



SUMMER BRIEF

- **Read** it carefully
- **Highlight** areas and make initial notes
- **Review** Project Development aspects
- **Check** Contextual 'Inspiration' on powerpoint and contextual links on the brief
- **Create** a time Frame
- **Explore** and enjoy
- Email me for any queries
- To share your summer project development

#brighton_met_fad_photo
@brighton_met_fad_photo

FACT or FICTION

UNIT 1 - Diagnostic Investigation into Creative Practice -Summer Brief



Jul' War Movie 1982

HAND OUT:	3.July 2025
HAND IN:	2.September 2025
AUTHOR- IV NAME & DATE:	Beatrice Haverich Georgina Hooper 1/7/25

Summer Project and Course Kit list

Contextual Research Artists

Magazines/ News Articles

Photography Organisations and Exhibition Lists

MATERIALS NEEDED:

For summer project: DSLR/ Analogue Camera/ Film/ SD cards/ Flash/ editing software/ g-drive

For start of term: DSLR camera (Canon, Nikon works with our studio lighting system)

What camera tips <https://www.techradar.com/uk/news/best-entry-level-dslr-camera>

SD card 32GB/ SD card reader/ USB stick/ external hard drive

Additional kit (College art shop or any other supplier of your choice):

10X8 inch/ 25X20 cm b/w photographic paper

100 ASA Black and White 35mm Film

400 ASA Black and White 35mm Film

A5 Notebook



Sandy Skoglund, Radioactive Cats, 1981

WHAT YOU NEED TO SUBMIT

Google-slides with the above tasks

On the first day back, you will submit a minimum of 20 slides (ppt) in total. Please note you will be discussing your work in small groups with your peers. This work will be the initial stages of building your portfolio.

On the 2nd of September 2025

CONTEXTUAL RESEARCH: (a starting point, not exhaustive list)

Suggested Photographers: Samuel Fosso, Sandy Skoglund, James Casebere, Laura Simmons, Joseph Schultz, Thomas Ruff, Nico Krinjo, Thomas Demand, Bernd & Hilla Becher, New Typologies Photographers, Sophie Ristelhueber, Sandro Giordano's series 'In Extremis' and Denis Darzacq series 'The Fall'. Eadweard Muybridge, Mike Mandel and Larry Sultan, Cindy Sherman, Sherrie Levine, Richard Prince, Jeff Wall, Gregory Crewdson, Joan Fontcuberta 'Stranger than Fiction', Andreas Gursky, Morgan Ashcom, Susan Lipper Grapevine, Alex Webb, Jacob Aue Sobol, Richard Kalvar, Solve Sundsbo, Mika Ninagawa.

Magazine/ News articles

<https://www.bbc.com/future/article/20170629-the-hidden-signs-that-can-reveal-if-a-photo-is-fake>

<https://www.theguardian.com/artanddesign/2023/apr/18/ai-threat-boris-eldagsen-fake-photo-duped-sony-judges-hits-back>

<https://magazine.artland.com/staged-photography-top-ten/>

Photography Organisations and Exhibition Links:

Lensculture: <https://www.lensculture.com/> Source Photographic Review: <https://www.source.ie/index.php>

Photoworks: <https://photoworks.org.uk/> British Journal of Photography: <https://www.1854.photography/>

The Photographers Gallery: <https://thephotographersgallery.org.uk/> Flowers East:

<https://www.flowersgallery.com/exhibitions/> Dazed Online: <https://www.dazeddigital.com>

Tate online: <https://www.tate.org.uk/about-us/projects/unilever-series-turbinegeneration/online-gallery>

Magnum Gallery: <https://www.magnumphotos.com/shop/gallery/>

Yossi Milo Gallery: <https://www.yossimilo.com/>

Michael Hoppen Gallery: <https://www.michaelhoppengallery.com/>

Street Photography_ In Camera Techniques- Composition

Jacob Aue Sobol



Richard Kalvar



Perspective



Hyper-real colours

Depth of Field

Alex Webb



Documentary- Portraiture

Susan Lipper- Grapevine 1988-1992



Thomas Ruff

Constructed scenes



Sandy Skoglund



Saul Leiter

Sandro Giordano 'In Extremis'



Denis Darzacq 'Hyper'



Mike Mandall -Slow Shutter



Stillife/ Nature Joan Fontcuberta



Fashion

Mika Ninagawa



Samuel Fosso



Collage

Sherrie Levine



Nico Krijno



Architecture

Josef Schulz



Landscape

Sophie
Ristelhueber

Contextual Links (for slides)

<https://www.anatomyfilms.com/thomas-ruff-portraits/>

<https://www.1854.photography/2020/04/evidence-of-work-nico-krijnos-hypnotic-stills/>

<https://iudblog.wordpress.com/2014/08/23/scarred-ground-sophie-ristelhueber/>

<https://www.photographize.co/articles/sandrogiordano/>

<https://agencevu.com/en/serie/hyper-2008-2010/>

<https://www.artsy.net/artwork/mike-mandel-kids-clean-desks>

<https://www.anothermag.com/art-photography/3806/joan-fontcuberta-stranger-than-fiction>

<https://www.nyartbeat.com/event/2016/B5F5>

**Follow us on Instagram for
information, sharing summer
project explorations and
inspiration about your future!**



KEEP IN TOUCH over the SUMMER

@brighton_met_fad_photo

To share your Summer project developments, including
own work and interesting research.

Please

hashtag: #brighton_met_fad_photo

And

tag: @brighton_met_fad_photo

BE A STUDENT
THAT HAS

DETERMINATION
RESILIENCE
& MOTIVATION

GET READY TO
EXPLORE AND
TAKE CREATIVE
RISKS....

ENJOY THE
SUMMER BRIEF!



Further information

Admissions, enrolment and general queries: admissions@gbmc.ac.uk

Financial support, including bursary queries: studentsupportbrighton@gbmc.ac.uk

Additional Learning Support: learningsupportbrighton@gbmc.ac.uk

Beatrice Haverich

Course Leader Foundation Diploma Photography

beatrice.haverich@gbmc.ac.uk

Creative Industries: Brighton Metropolitan College

Email: CIBrighton@gbmc.ac.uk